

PEOPLE MENTIONED IN WALDEN

HIPPOCRATES



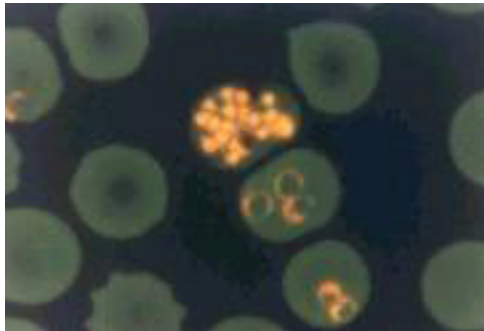
WALDEN: The whole ground of human life seems to some to have been gone over by their predecessors, both the heights and the valleys, and all things to have been cared for. According to Evelyn, "the wise Solomon prescribed ordinances for the very distances of trees; and the Roman praetors have decided how often you may go into your neighbor's land to gather the acorns which fall on it without trespass, and what share belongs to that neighbor." Hippocrates has even left directions how we should cut our nails; that is, even with the ends of the fingers, neither shorter nor longer. Undoubtedly the very tedium and ennui which presume to have exhausted the variety and the joys of life are as old as Adam. But man's capacities have never been measured; nor are we to judge of what he can do by any precedents, so little has been tried. Whatever have been thy failures hitherto, "be not afflicted, my child, for who shall assign to thee what thou hast left undone?"

PEOPLE OF
WALDEN

PEOPLE MENTIONED IN WALDEN

500 BCE

Malaria was described by Dr. Hippocrates. From this point until 1400 CE the sickle-cell trait would be spreading by migration and by slave trade out of ancient malaria centers.



460 BCE

The bacillus *Mycobacterium tuberculosis* would be well recorded in Greece in the age of Pericles, which is to say, from this point until 370 BCE. Dr. Hippocrates described pulmonary tuberculosis as it occurred in his day-to-day clinical experience.

"The Lord shall smite thee with a consumption, and with a fever, and with an inflammation ... and they shall pursue thee until thou perish." – DEUTERONOMY 28:22





THE PEOPLE OF WALDEN:

HIPPOCRATES

PEOPLE MENTIONED IN WALDEN

From the work of Hippocrates comes the first authentic accounts of phthisis. He described what he called phymata (tubercles) in the tissues of cattle, pigs, and sheep. He also was the first to document the early stages of phthisis: Dry cough, yellow sputum, chest pains, malaise (fatigue), and wasting. The meaning of “phthisis” is “I waste away” and the meaning of “tabes” is “wasting,” as in “Tabes mesenterica,” tuberculosis of the mesenteric lymph nodes. Hippocrates used the term “Scrofulous tumor” to describe skin lesions caused by tuberculosis, while the French would deploy the term “ecrouelles.” “Gibbus” in Latin means “hunch-back,” as in tuberculosis of the spine. “Lupus vulgaris” is tuberculosis of the skin.

412 BCE

Dr. [Hippocrates](#) described an outbreak of an [influenza](#)-like illness.



THE PEOPLE OF WALDEN:

HIPPOCRATES

PEOPLE MENTIONED IN WALDEN

WALDEN: The whole ground of human life seems to some to have been gone over by their predecessors, both the heights and the valleys, and all things to have been cared for. According to Evelyn, "the wise Solomon prescribed ordinances for the very distances of trees; and the Roman praetors have decided how often you may go into your neighbor's land to gather the acorns which fall on it without trespass, and what share belongs to that neighbor." Hippocrates has even left directions how we should cut our nails; that is, even with the ends of the fingers, neither shorter nor longer. Undoubtedly the very tedium and ennui which presume to have exhausted the variety and the joys of life are as old as Adam. But man's capacities have never been measured; nor are we to judge of what he can do by any precedents, so little has been tried. Whatever have been thy failures hitherto, "be not afflicted, my child, for who shall assign to thee what thou hast left undone?"

PEOPLE OF WALDEN



HORACE HAYMAN WILSON
SOLON OF ATHENS
HIPPOCRATES
JOHN EVELYN

This quotation in WALDEN is from Section 4 of the treatise "In the Surgery," in which Dr. Hippocrates was advising that a surgeon's "nails [are] neither to exceed nor come short of the finger tips."¹

400 BCE

1.HIPPOCRATES, trans. E.T. Withington, Loeb Library (London, 1gz3-39), 111, 63.



THE PEOPLE OF WALDEN:

HIPPOCRATES

PEOPLE MENTIONED IN WALDEN

Hippocrates wrote numerous treatises on medicinal plants, such as saffron, cinnamon, thyme, coriander, mint, and marjoram.



OTHERS

Plant	Name	Place
Turnip	<i>Brassica rapa</i>	Western Asia
Apple	<i>Malus Pumila</i>	Southwestern Asia

PLANTS



COPYRIGHT NOTICE: In addition to the property of others, such as extensive quotations and reproductions of images, this "read-only" computer file contains a great deal of special work product of Austin Meredith, copyright ©2013. Access to these interim materials will eventually be offered for a fee in order to recoup some of the costs of preparation. My hypercontext button through hyperspace –resulting in navigation problems– allows for an utter alteration of the context within which one is experiencing a specific content already being viewed, is claimed as proprietary to Austin Meredith – and therefore freely available for use by all. Limited permission to copy such files, or any material from such files, must be obtained in advance in writing from the "Stack of the Artist of Kouroo" Project, 833 Berkeley St., Durham NC 27705. Please contact the project at <Kouroo@kouroo.info>.

"It's all now you see. Yesterday won't be over until tomorrow and tomorrow began ten thousand years ago."
 – Remark by character "Garin Stevens" in William Faulkner's INTRUDER IN THE DUST





THE PEOPLE OF WALDEN:

HIPPOCRATES

PEOPLE MENTIONED IN WALDEN

Prepared: October 9, 2013



THE PEOPLE OF WALDEN:

HIPPOCRATES

PEOPLE MENTIONED IN WALDEN

ARRGH AUTOMATED RESEARCH REPORT

GENERATION HOTLINE



This stuff presumably looks to you as if it were generated by a human. Such is not the case. Instead, upon someone's request we have pulled it out of the hat of a pirate that has grown out of the shoulder of our pet parrot "Laura" (depicted above). What these chronological lists are: they are research reports compiled by ARRGH algorithms out of a database of data modules which we term the Kouroo Contexture. This is data mining. To respond to such a request for information, we merely push a button.



THE PEOPLE OF WALDEN:

HIPPOCRATES

PEOPLE MENTIONED IN WALDEN

Commonly, the first output of the program has obvious deficiencies and so we need to go back into the data modules stored in the contexture and do a minor amount of tweaking, and then we need to punch that button again and do a recompile of the chronology – but there is nothing here that remotely resembles the ordinary “writerly” process which you know and love. As the contents of this originating contexture improve, and as the programming improves, and as funding becomes available (to date no funding whatever has been needed in the creation of this facility, the entire operation being run out of pocket change) we expect a diminished need to do such tweaking and recompiling, and we fully expect to achieve a simulation of a generous and untiring robotic research librarian. Onward and upward in this brave new world.

First come first serve. There is no charge.
Place your requests with <Kouroo@kouroo.info>.
Arrgh.